

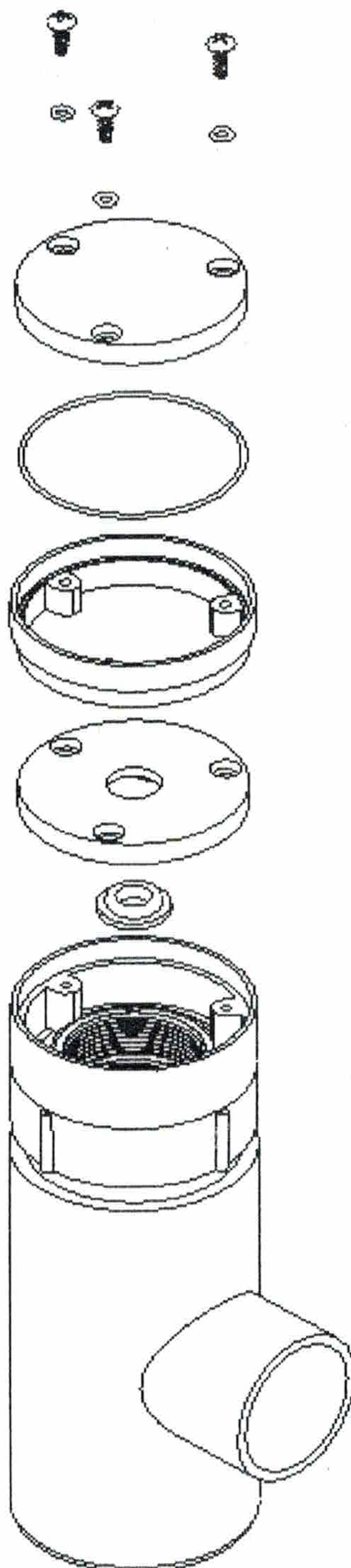


MICRO STREAMTM

UNIVERSAL

LED BUBBLER HOUSING

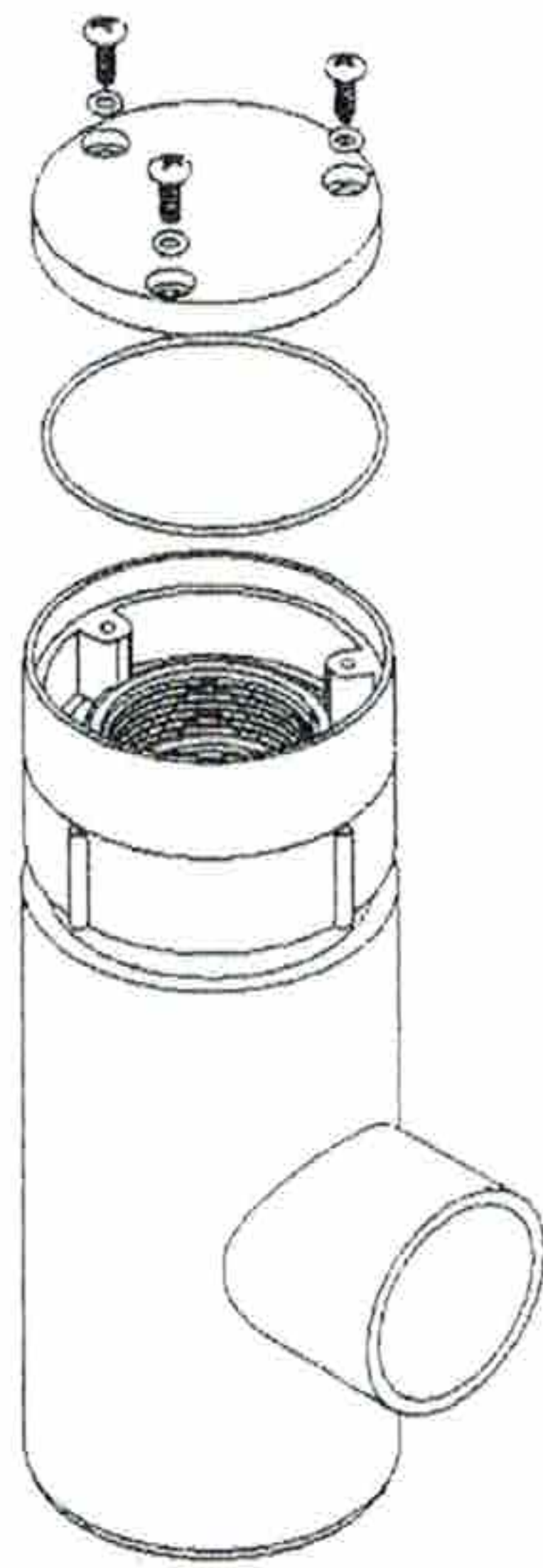
LED Fixture not to
exceed 7 inches



Patent Pending

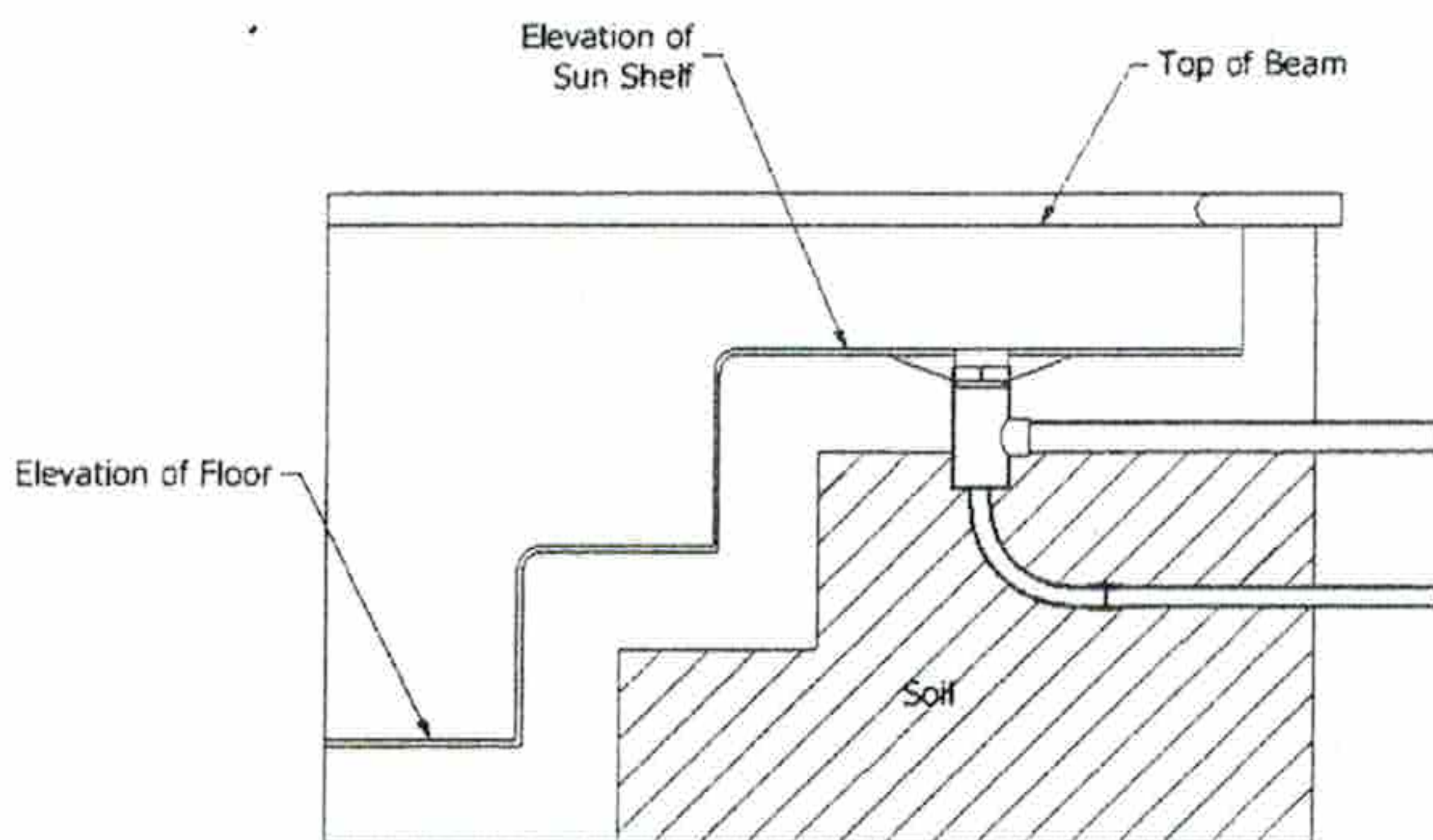
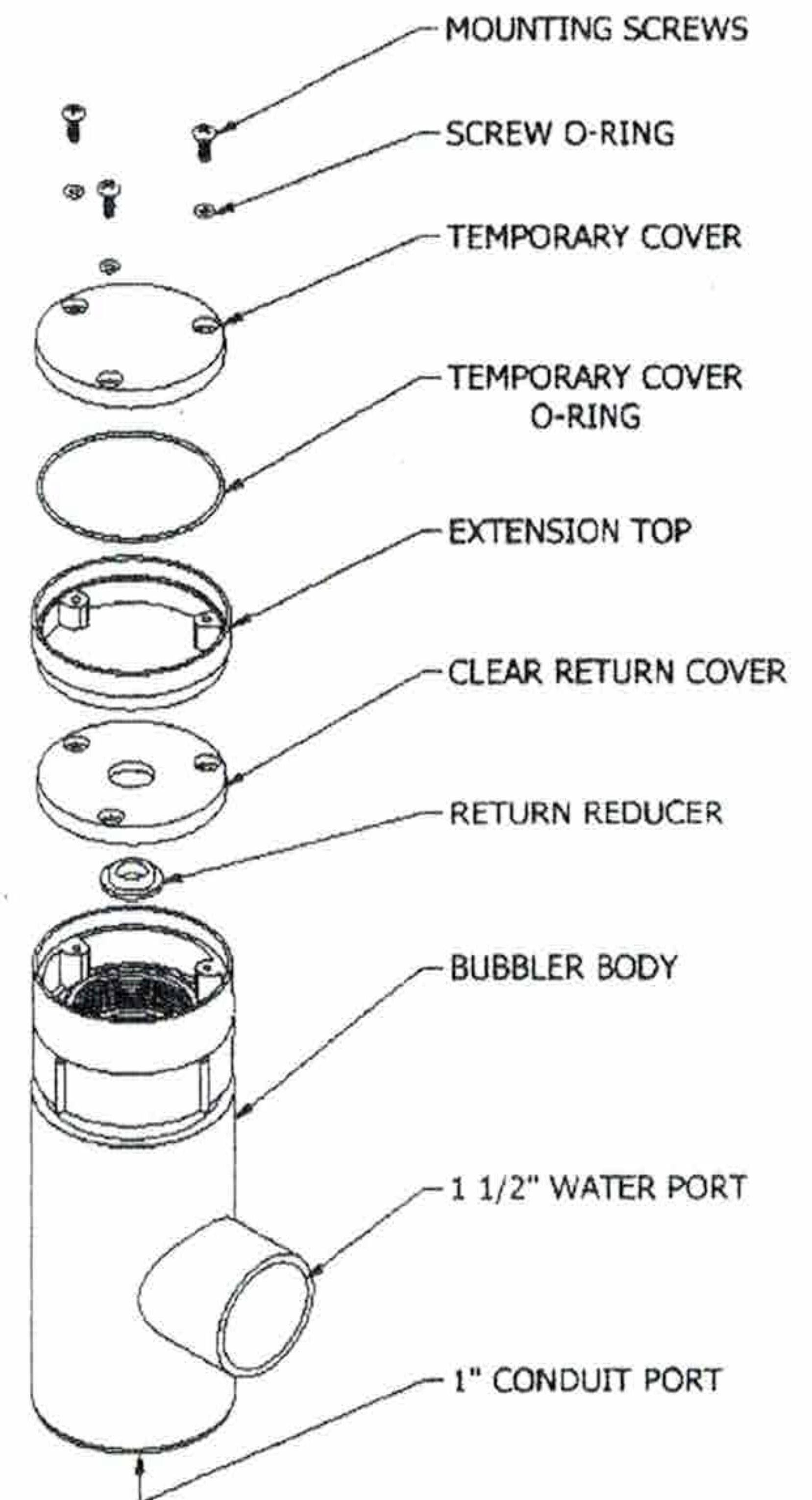
PoolPalUSA.com

877-825-POOL (7665)



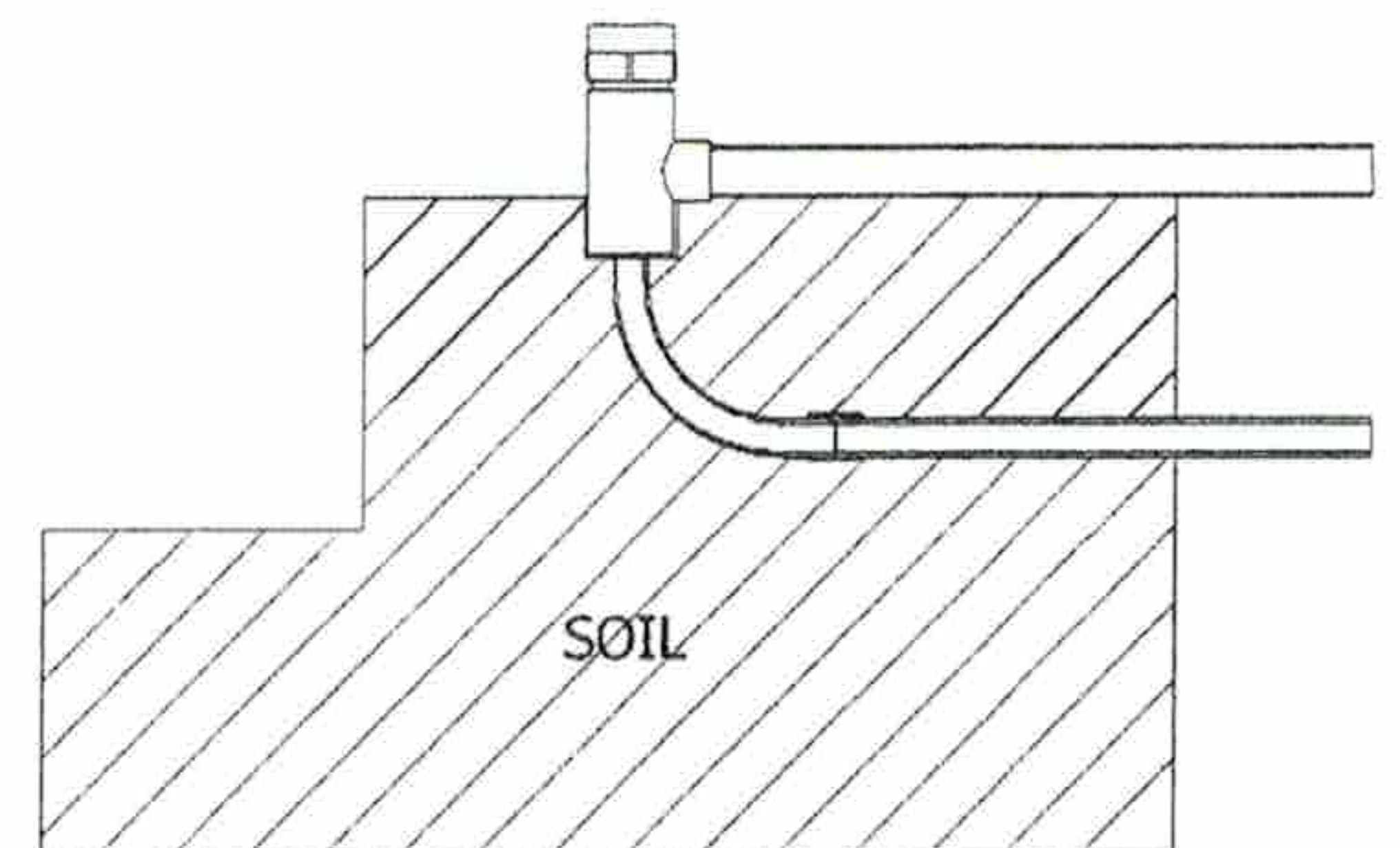
Step 1

Install temporary cover, lining up the 3 screw holes with screws provided. **DO NOT OVERTIGHTEN.** Ensure the surface area of the unit and all the O-rings are clean and free of debris. Make sure to use the seat O-ring and screw O-rings to ensure a good seal for pressure testing.



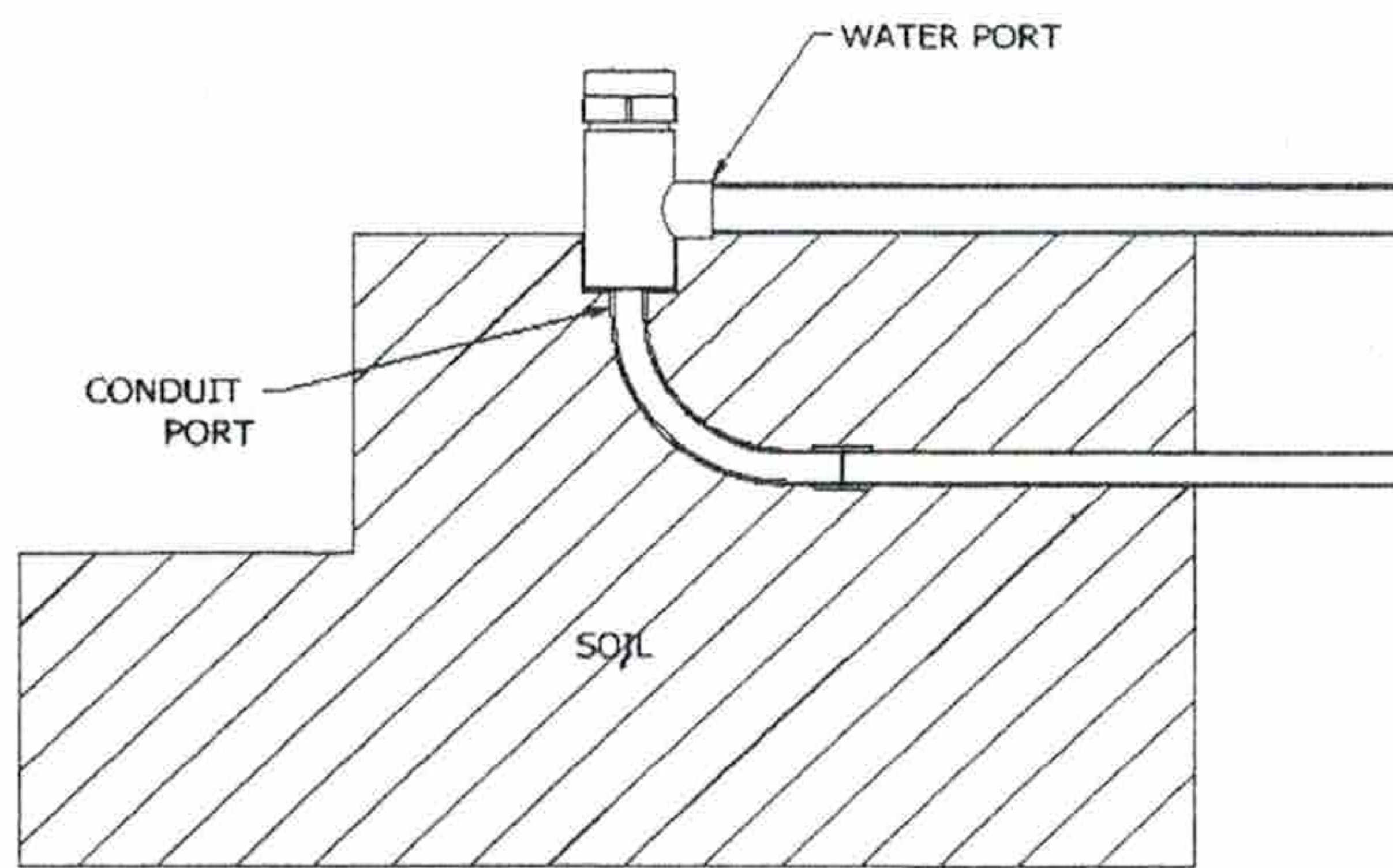
Step 2

Determine the elevations of all important future points in the pool. Using these points, calculate the exact location and elevation at which the LED bubbler will need to be set at to function at optimal efficiency.



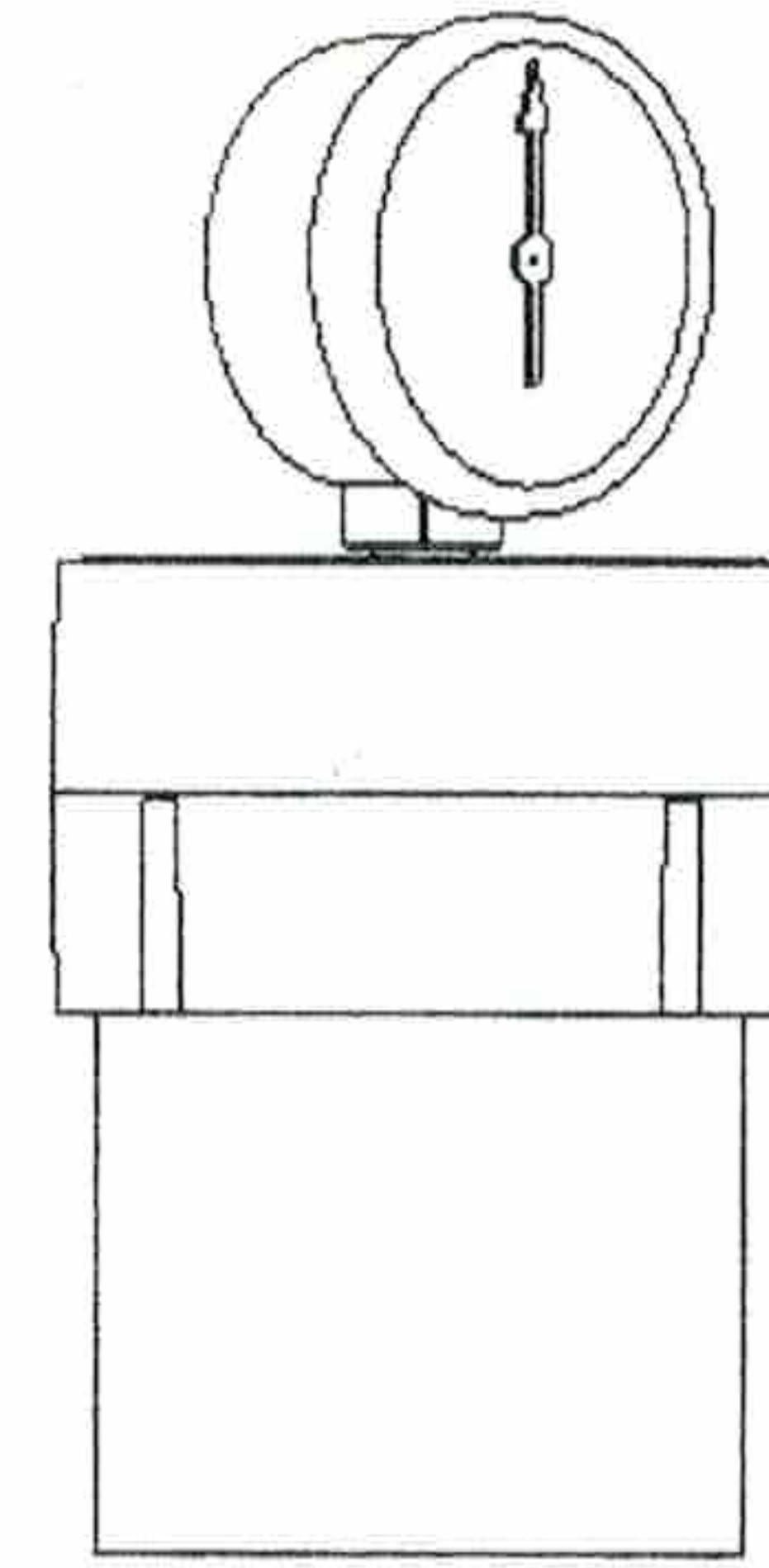
Step 3

Trench out any pathway required to run the electric conduit, and the water feed pipe to your bubbler.



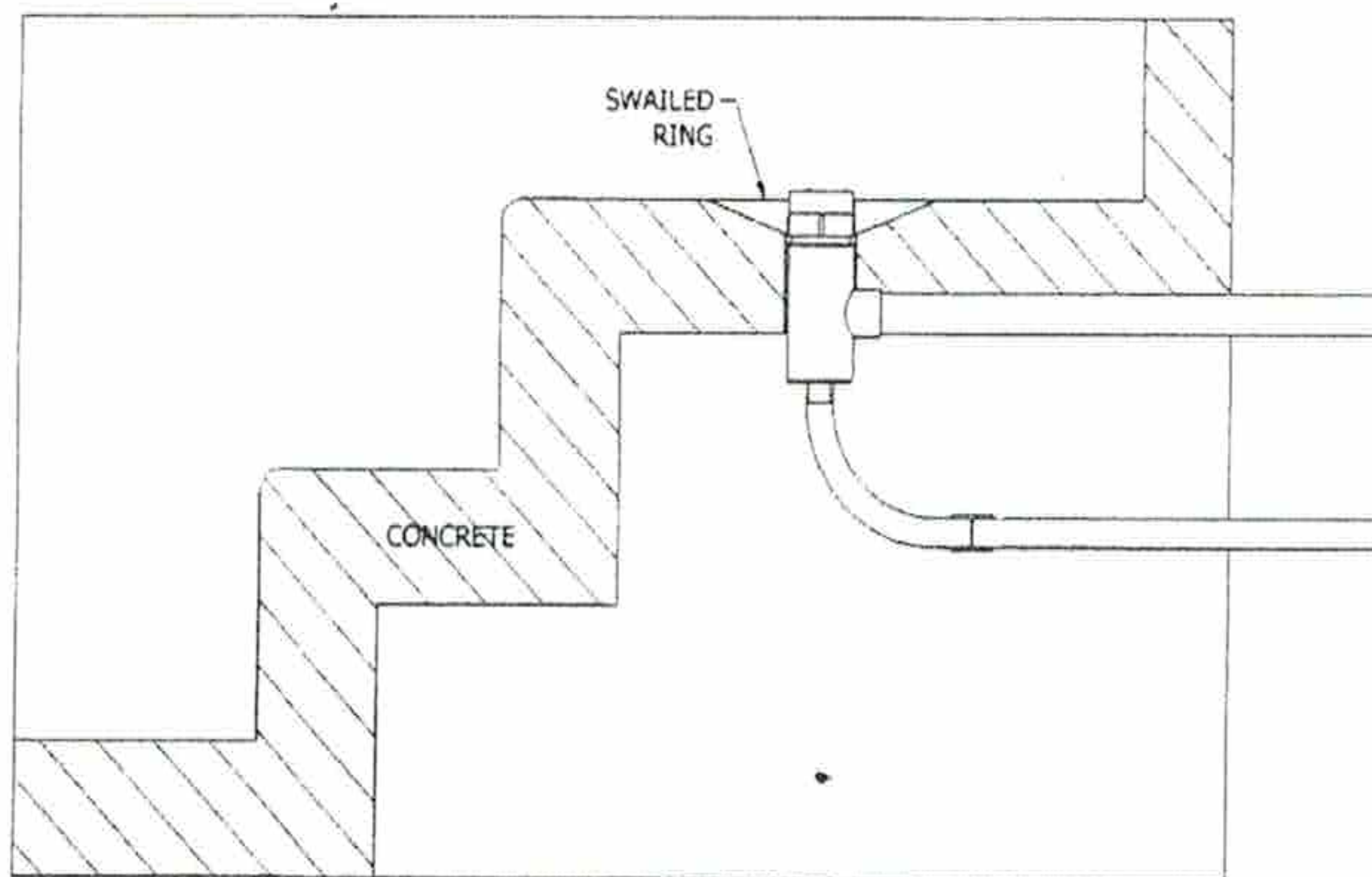
Step 4

Glue in the 1" conduit sweep and conduit into the conduit port at the bottom of the unit and direct the conduit as desired. Backfill the conduit as needed and then glue in the 1 ½" water feed to the water port of the unit and direct the water feed pipe as desired. Make sure to use cleaner and primer to complete this step.



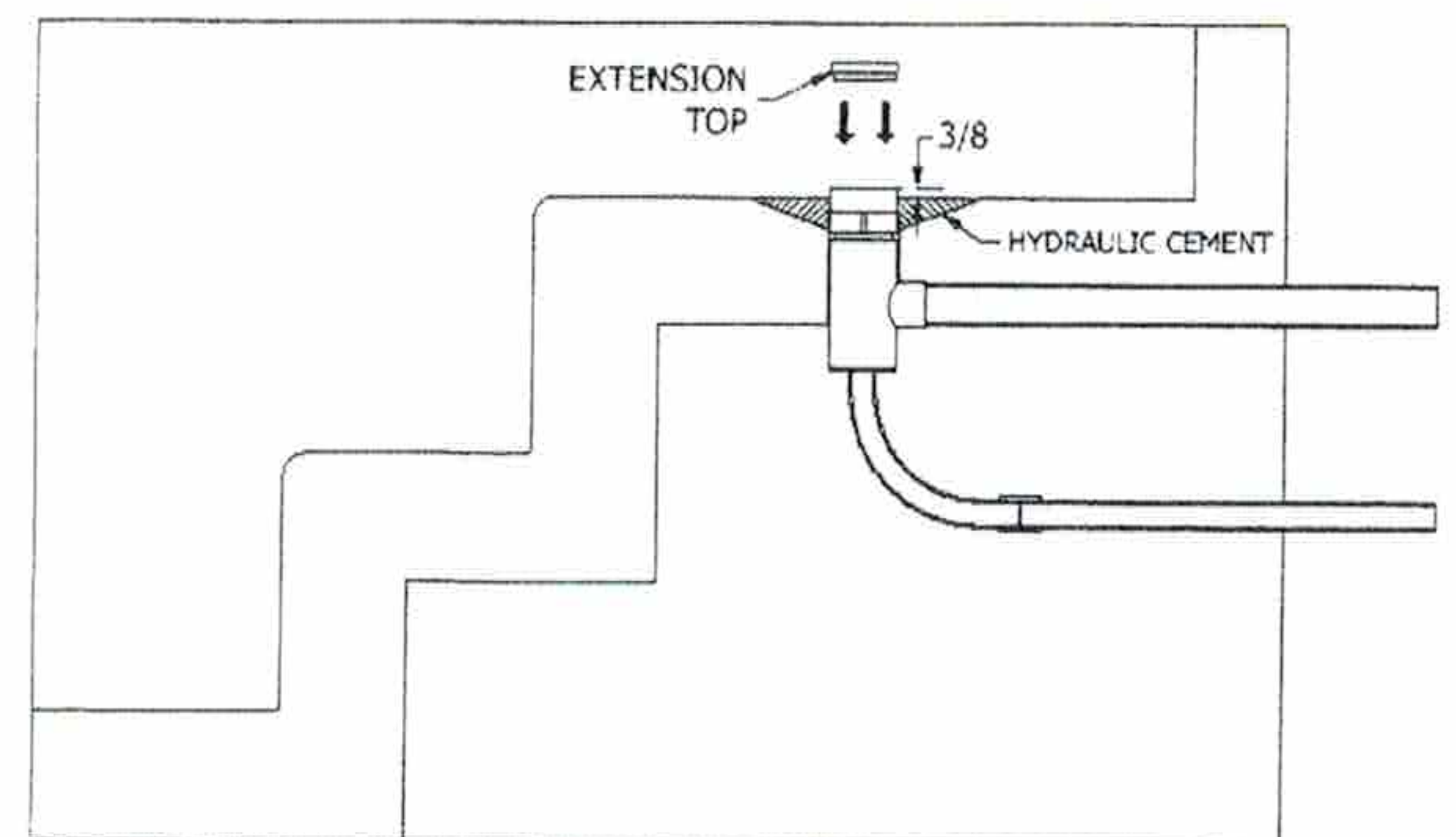
Step 5

Once the conduit and water feed pipe are completed as desired, the lines are ready for pressure testing. The end of each pipe (conduit and water feed pipe) should be either connected to a manifold or capped as needed. Pressure test according to local requirements.



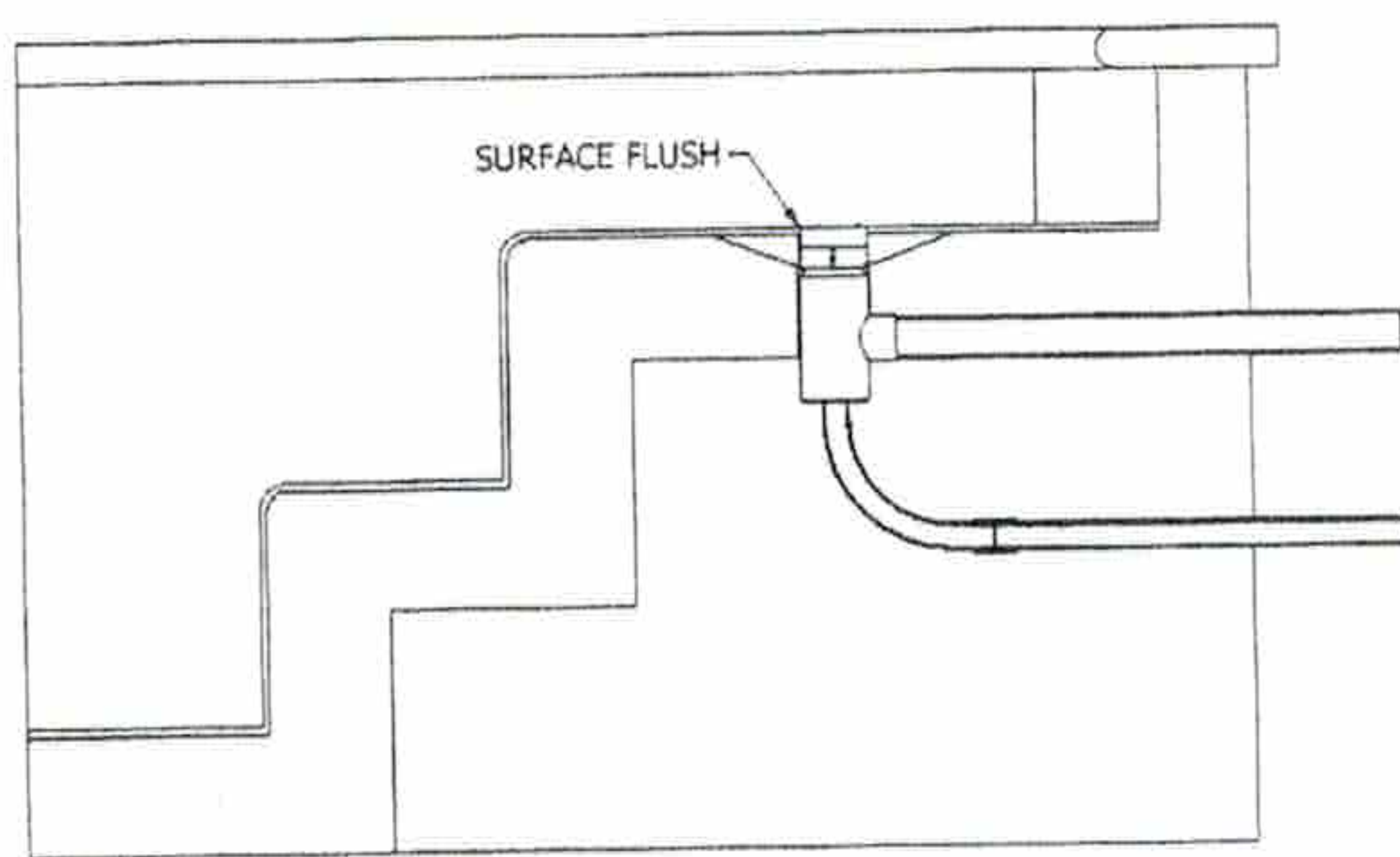
Step 6

Place concrete around the unit as desired, making sure to leave a swaled ring around the top of the unit, as pictured. Ideally, the concrete should be finished at an elevation of approximately 3/8" below the top of the unit, and the swaled ring should be below.



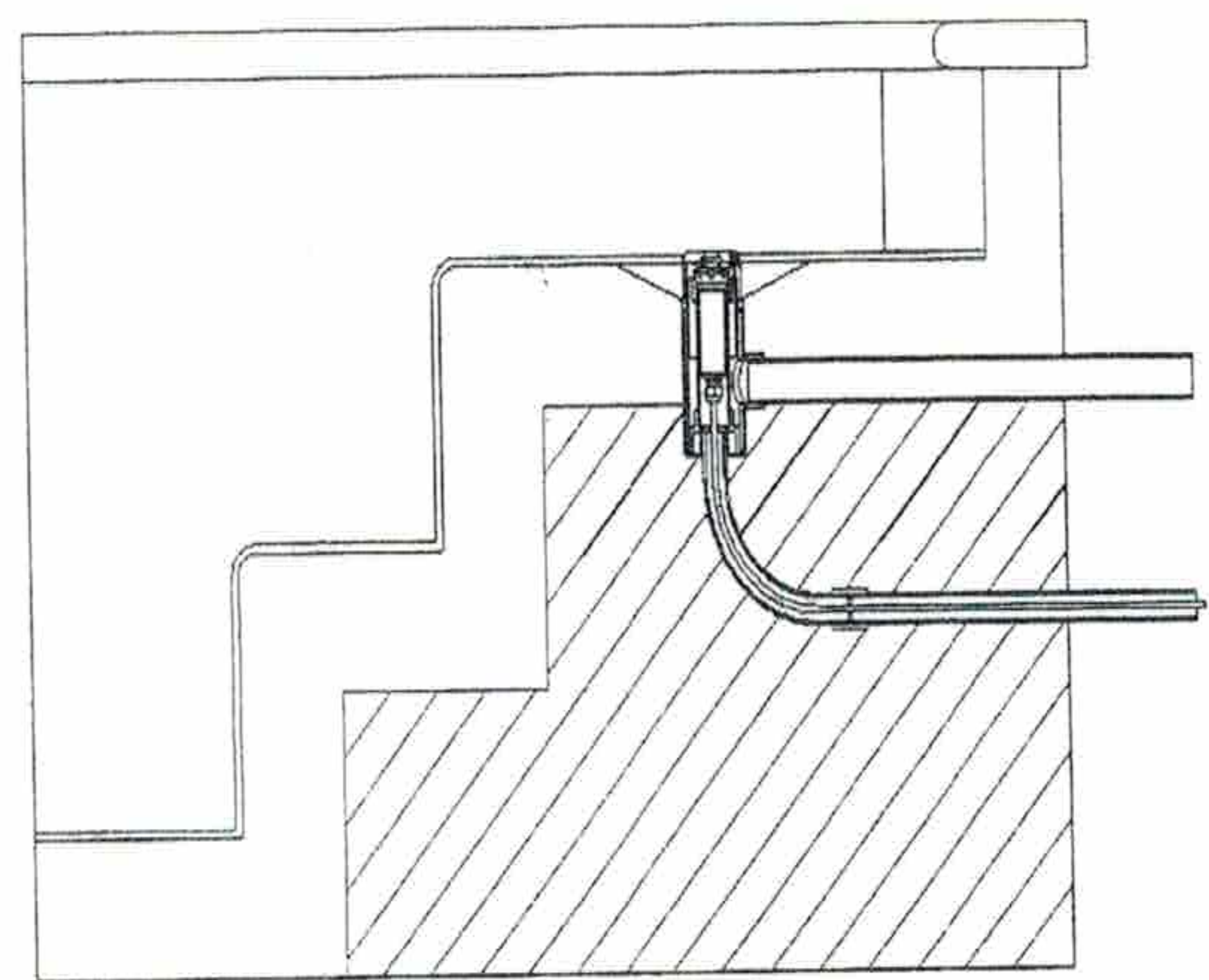
Step 7

After concrete has cured, use hydraulic cement around the perimeter of the top of the unit, infilling the swaled area while still using approximately 3/8" below the top of the unit to allow for a pool surface to be applied. **If the concrete pour level is too high, glue in the optional extension ring to raise the overall unit's height.**



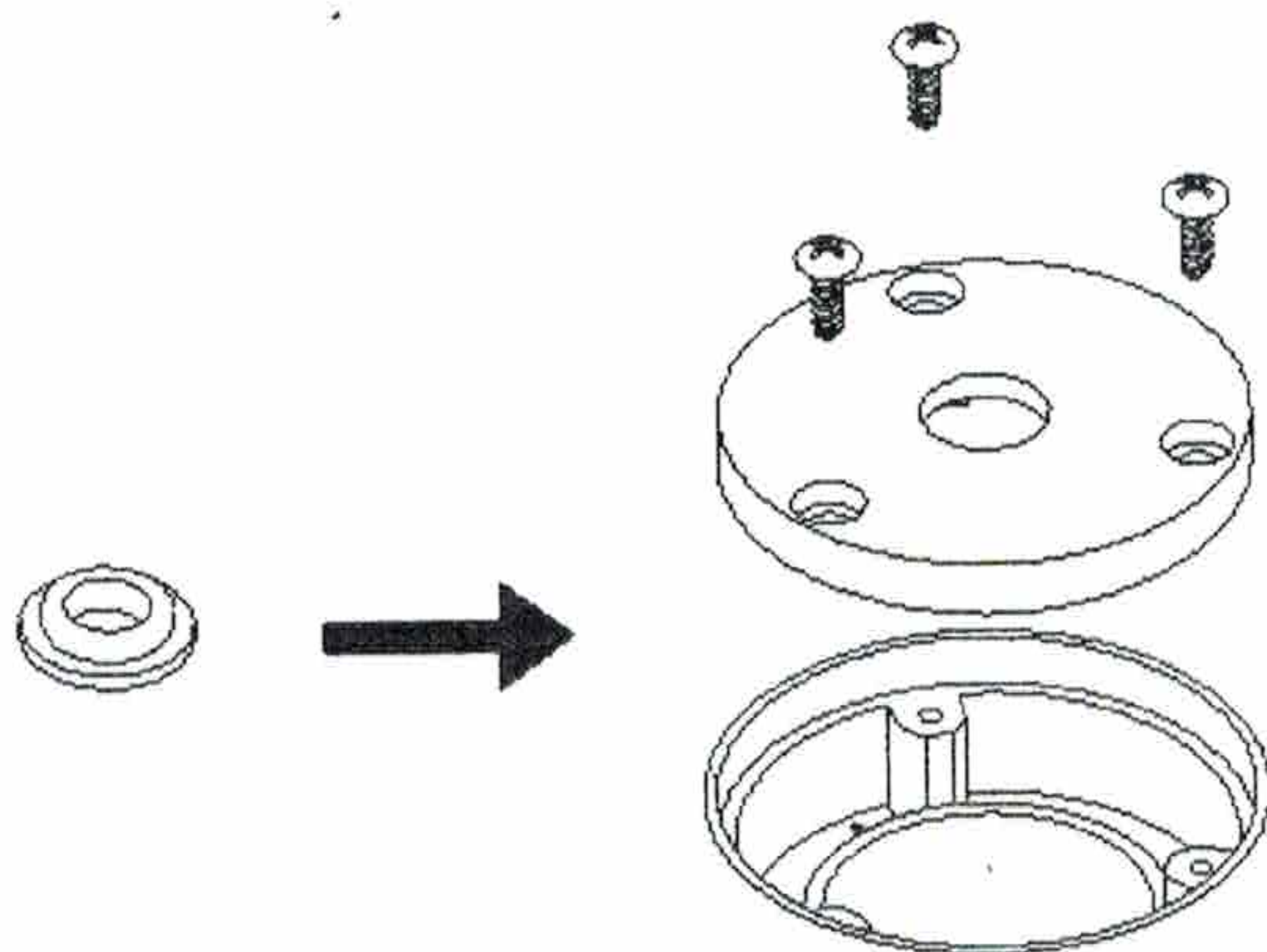
Step 8

The unit is now ready to receive the pool surface application. The surface should be flush to the top of the unit.



Step 9

Remove the temporary cover and install the light fixture as directed by the light fixture's (max. 7" Light) manufacturer's recommendations.



Step 10

Install the clear cover with screws provided. **DO NOT OVERTIGHTEN.** If a tighter stream of water is desired, press the lens-reducer into the bottom side of the clear cover.

Step 11

Enjoy your new Micro Stream Universal LED Bubbler!